



ARES MK7 SKID PLATE INSTALL GUIDE

Once you receive your new Ares Skid Plate you should have these parts:

- 1 Aluminum Skid Plate
- 2 Blue Steel Front Brackets
- 2 Aluminum Wings
- 6 10x40mm Bolts
- 2 10x25mm Bolts
- 3 8x25mm Bolts
- 2 4.8mm Self Tap Screws
- 6 10mm Nuts
- 4 10mm Fender Washers
- 6 10mm Small OD Flat Washers
- 10 10mm Lock Washers
- 3 8mm Flat Washers
- 3 8mm Lock Washers

Tools You Will Need:

- 12 Point Metric Socket Set with Extensions
- Long 17mm Wrench
- 17mm Ratchet Wrench
- Torx Bit Set
- Phillips Screw Driver
- Car Ramps or Jack With Jack Stands
- Never Seize Compound

Now that you have familiarized yourself with the parts of the skid plate and prepared the tools you will need to do the job, you're ready to get started.

Step #1: Drive your car onto a set of ramps or jack your car up and place jack stands under your car. Also put your emergency brake on and block the rear tires (we recommend using both the ramps and the jack stands). Start by removing all of the Torx screws holding the plastic skid plate onto the car. Remove the stock plastic skid plate.

Step #2: First you will be installing the front anchor bolts that support the front brackets. Take two of the 10x40mm bolts and slide a 10mm lock washer each one followed by a small 10mm flat washer. Locate the hole in the following two pictures and feed each 10x40mm bolt horizontally from the front of the car towards the back.

Picture A: Driver's and Passenger front upper frame hole location above both horns.



Picture B: Illustrating what the 10x40mm bolt looks like resting in place.



Next add a small 10mm flat washer to each 10x40mm bolt and thread a 10mm nut to each bolt by hand as tightly as you can. Tighten the nuts using your two 17mm wrenches. We found that if we held the bolt with our fingers we could tighten the nut with only our ratcheting wrench and not have to have a wrench on the bolt head.

Picture C: Nut tightened down making a stud anchor for the front blue brackets.



Set #3: Now you will be installing the front two blue steel brackets. They are both marked with either a D for Drivers and a P for Passenger side and they have a hole at the top for bolting onto the two studs you just installed on the frame. Slide both brackets onto the studs and add another small 10mm flat washer then 10mm lock washer and 10mm nut just like in the following picture. Tighten the nuts as much as you can by hand and then tighten the rest of the way using your ratchet and 17mm 12 point socket. Ensure the brackets are pushed up and stay in contact with the frame for maximum strength.

Picture D: Tightening nut with driver and extension on Left. Right picture is a fully installed passenger bracket. Make sure there is at least 1/4" clearance from the rubber hose.



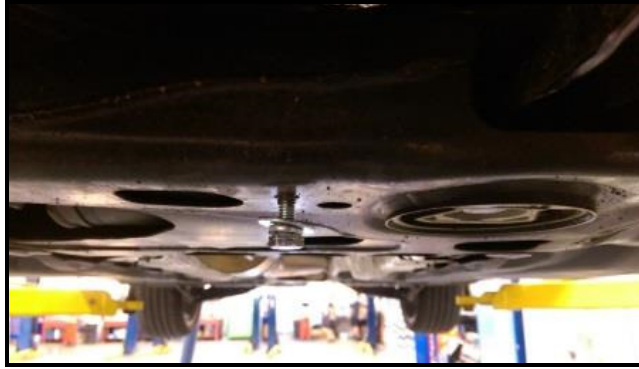
Step #4: Next you will be installing the front aluminum wings onto the skid plate. Place the wings over the holes on the front left and front right of the skid plate and run a 10x25mm bolt with some Anti-seize on the threads through the lower hole and add a 10mm lock washer and thread on a 10mm nut onto each bolt. Align the oval holes at the other end and then tighten the nuts onto the bolts. The wings have a slight bend in them so that they angle up towards the plastic of the car.

Picture E: One of the wings bolted onto the skid plate.



Step #5: Now you will need to assemble the last of the bolts. Place a lock washer then flat washer onto the four 10x40mm bolts as well as the three 8x25mm bolts. Add some Anti-seize to the threads of the bolts to prevent corrosion. Next you will thread in one of the 8mm bolts you prepared into the center hole on the sub frame behind the oil pan. Only thread it in 2-3 turns like the following picture. If the threads are corroded or the bolt is difficult to thread in, then the hole will need to be cleaned out with the 8mm tap.

Picture F:



Step #6: Now lift the aluminum skid plate up and slide the open slot hole at the back onto the 8mm bolt. While holding the front of the skid plate, thread the four 10x40mm bolts through the skid plate and into the fasteners on the bottom of the blue brackets. Next thread the last two 8mm bolts through the back of the skid plate and into the holes of the sub frame. Make sure all bolts are only in 2-3 turns and adjust the skid plate so it is centered on the car and pushed backwards as much as possible. Now tighten all the bolts that hold the skid plate onto the car. Last of all you can attach the tail end of the side skirts to the skid plate using the two 4.8mm Phillips screws.

Picture G:



Congratulations, you are done.



If you have any questions or concerns while installing this skid plate, please only contact the distributor you bought it from or ourselves as we are by far the most qualified to answer your questions. 250-963-3232

Copyrighted by: Evolution Import Inc
Not to be distributed